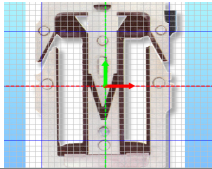
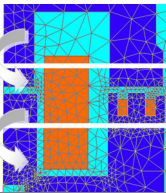


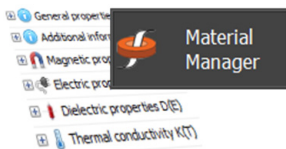

**Flux 11.2** New features  
 by CEDRAT

**■ The last generation of 2D sketching**


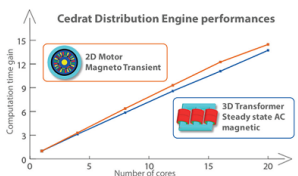
- **More fluidity** to enter 2D geometries
- Automatic corrections of defaults
- Draw from an image of your 2D plan

**■ No need to be a specialist to generate a good mesh!**


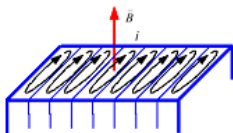
- Auto-adaption of the mesh during the solving in 2D (magnetostatics & electrostatics)
- Mesh quality ensured, based on the physics
- **Best compromise between the number of nodes and accuracy**

**■ A new material database manager**


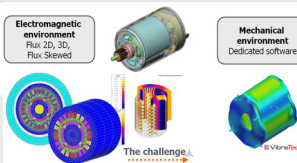
- More material data provided
- Brand new interface
- **Create & manage your data in an efficient way**

**■ More computing power: smart & powerful**


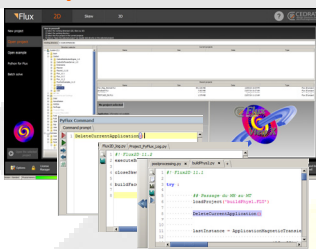
- Advanced parametric tools for a smart search of the design space ...
- ...and use **the full power of distributed computation.**

**■ Advanced modeling capabilities**


- Taking into account **anisotropies**
- New models for **iron losses**

**■ Vibro-acoustic analysis for noise reduction of electric machines**


- Embedded **dedicated tools**
- Direct **connection to LMS Virtual.Lab® and MSC Nastran®**

**■ Easy to learn and use**


- **New supervisor** with a quick access to many examples
- More **intuitive** window management
- **New Python editor** to help the writing and debug of scripts and macros
- User subroutines in Groovy (Java) to implement advanced models